

# Dive Trip with MV Andaman



## Schedule 2024/2025



Liveboard on MV Andaman					
Day	Dive	Dive Site	Cabin Type	Diver Price (THB)	Non-Diver Price (THB)
3 day/3 night	9	Surin Islands, Koh Tachai & Richelieu Rock	Single Bed in 6-Berth Cabin	16,600	12,500
			Standard Double Bed Cabin	18,000	13,900
			Ensuite Double Bed Cabin	19,000	14,900
		National Park Fees*			1,800
4 day/4 night	13	Similan & Surin Islands, Koh Bon, Koh Tachai & Richelieu Rock	Single Bed in 6-Berth Cabin	20,600	15,500
			Standard Double Bed Cabin	22,600	17,500
			Ensuite Double Bed Cabin	23,600	18,800
		National Park Fees: South to North *			1,800
National Park Fees: North to South *			2,000	1,000	
7 day/7 night	22	Similan & Surin Islands, Koh Bon, Koh Tachai & Richelieu Rock	Single Bed in 6-Berth Cabin	32,000	24,000
			Standard Double Bed Cabin	35,500	27,500
			Ensuite Double Bed Cabin	37,250	29,300
		National Park Fees: South to North *			3,600
National Park Fees: North to South *			3,800	2,000	
11 day/11 night	35	Similan & Surin Islands, Koh Bon, Koh Tachai & Richelieu Rock	Single Bed in 6-Berth Cabin	49,500	37,200
			Standard Double Bed Cabin	55,000	42,200
			Ensuite Double Bed Cabin	57,250	44,700
		National Park Fees*			5,600

### All Prices Include:

- Full Set of Equipment including Dive Computer, SMB, Torch
- All Meals
- Water, Soft Drinks, Fruits
- Tank, Weights
- Dive Guide
- Return Transport to Hotel after the Trip (Khao Lak/Bang Niang Area)

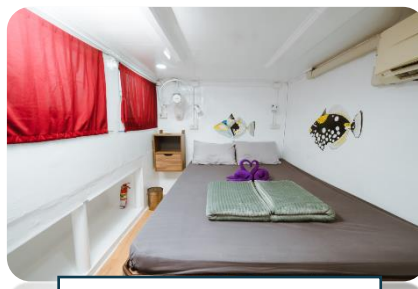
### All Prices Exclude:

- National Park Fee \*
- Pickup from Hotel to Dive Center before Departure
- Coffee, Ice Cream, Beer, and Wine

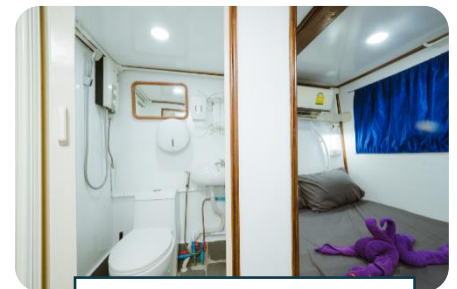
## Cabins



Single Bed in 6-Berth Cabin



Standard Double Bed Cabin



Ensuite Double Bed Cabin

## ITINERARY

**Check-in:** Check-in is at the Dive Center, and customers who need to pay any remaining balance for the trip or be fitted with diving equipment must arrive by 16:00 on the day of departure. All customers are required to complete a registration form, sign a liability release form, and present certification cards before departure.

**Departure:** After check-in, payment, and equipment fitting (or checking personal equipment), customers should return to the dive center by 18:15, prepared for departure. Please have a meal before departure, as no dinner will be provided on the first night; however, fruit and cookies will be available.

**Return:** We provide transfers from the pier back to the Dive Center, usually arriving before 17:00. We also offer transfers to hotels in the Khao Lak/Bang Niang area. Taxis to Phuket, the airport, or other areas can be arranged upon request, with prices available on inquiry.



## CONTACT US

Flippers Dive Co., Ltd.

Address: 13/77 Moo 7, Khuk Khak, Takua Pa, Phang Nga 82220

Phone & WhatsApp: 094-807-7669

Email Us: info@flippers-dive.com

